

WVS MILK QUALITY

Waupun Veterinary Services, LLC - Your Progressive Dairy Partner since 1958

Wisconsin Monthly Somatic Cell Count Highest in July and August



*By Dr. Mark Sosalla
of Waupun Veterinary Services*

Wisconsin monthly SCC averages are highest in July and August. This is because of the heat and humidity raising the number of environmental bugs on our farms. This is a good time to review practices that help to limit the problems with environmental

organisms.

Andy Johnson always talks about the importance of milking clean dry teats. In the summertime the walkways frequently have slop in them that the cows must walk through to get to the parlor. Fresh manure on the legs of cattle entering the parlor is a dead giveaway that cattle are walking through slop to get to the parlors.

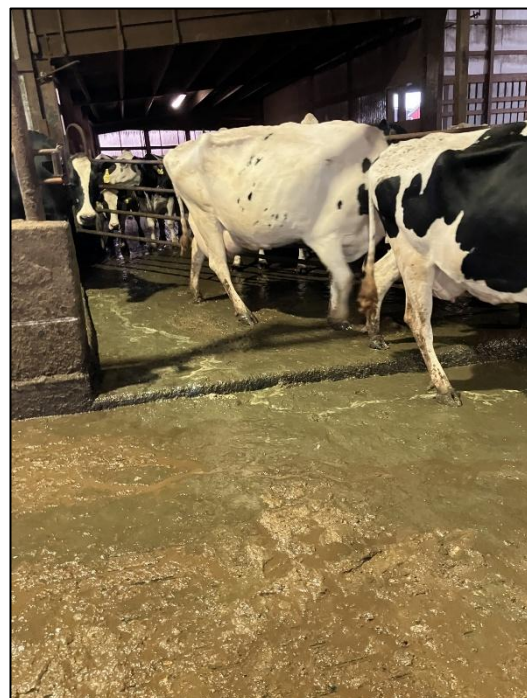
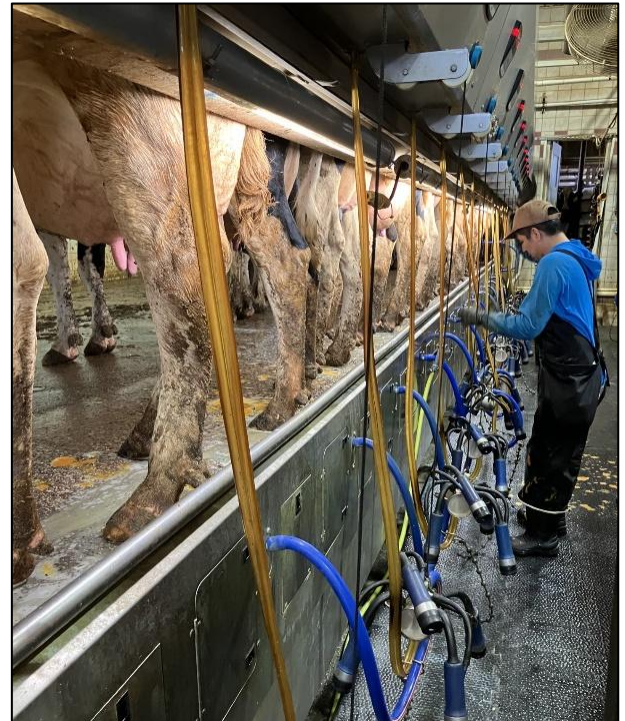
During summer it is especially important to keep the walkways clean. The cattle also need to be brought into the parlor in a calm manner, so they don't run through areas of slop causing manure splatter.

Because of the increased environmental load of bacteria good quality dips need to be used in times of increased risk. Some herds can get by with lower quality teat dips in times of less risk, but they need the "horsepower" of good dips in the hot summer months.

In my opinion chlorine dioxide or iodine dips do better in the hot months. If using chlorine dioxide dips, they must be mixed properly to get the right ppm of the chlorine dioxide.

It is extremely important that the milkers do a good job in cleaning off the teats. They should use a downward twisting movement of the towels when drying the teats. The towel should then be flipped, and the teat ends should be rubbed to get the bottom

Continued on the back page.



It's important to keep walkways clean and bring cows into the parlor in a calm manner so they don't cause manure splatter.

Continued from the front page.

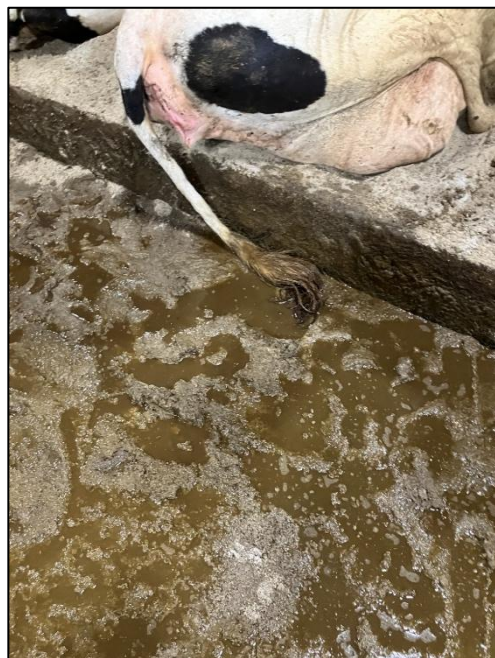
of the teats clean. Parlor managers need to be more vigilant in the summer and should do teat end swabs to make sure the bottom of the teats are getting clean.

Poor teat end swabs are pictured on the bottom left photo. Milkers need to do a better job cleaning the teats.

The bottom middle photo shows poor unit alignment on a dirty cow. Unit alignment is important to limit the amount of liner slips. Liner slips can actually cause bacteria to be pushed up into the teats.

The bottom right photo shows the tail switch in slop. It is important to keep tail switches trimmed on cows. We are no longer allowed to dock tails, so the next best thing is to keep the tails trimmed.

There are herds that are able to maintain low SCC counts in the summer. These herds pay special attention to detail in the hot summer months.



National Dairy Quality Awards

The National Dairy Quality Awards, now in its 31st year, recognizes the very best in quality milk production. The goal of the NDQA program is to honor dairy producers from across the United States and Canada who have successfully placed high priority on producing milk of the highest quality.

The top applicants will be selected based on the data provided in the questionnaire. Producers are nominated using a short questionnaire. Somatic cell count and standard plate count data are based on June 1, 2023-May 31, 2024. The finalists and their nominators will be asked to complete a more detailed application form used for final judging. Judges will evaluate the final applications for measures of milk quality, systems of monitoring udder health, milking routine, protocols for detection and treatment of clinical and subclinical cases, treatment protocols and strategies for overall herd health and welfare. It has been our experience that to qualify for an award your SCC needs to be under 100,000 for each month and the plate counts needs to be under 5.

The deadline for submitting nominations is **August 31, 2025**. If you think that you would be eligible to win an award and would like to be nominated, please let us know and we will fill out the application. Winning an award makes your farm more desirable to milk processors.